


NANOFIL[®]

Always For Your Smile 

PERFECT—LINK
UNIVERSAL ADHESIVE

CE 0197



AT&M Biomaterials Co., Ltd.

PERFECT-LINK Universal Adhesive

NANOFIL[®]

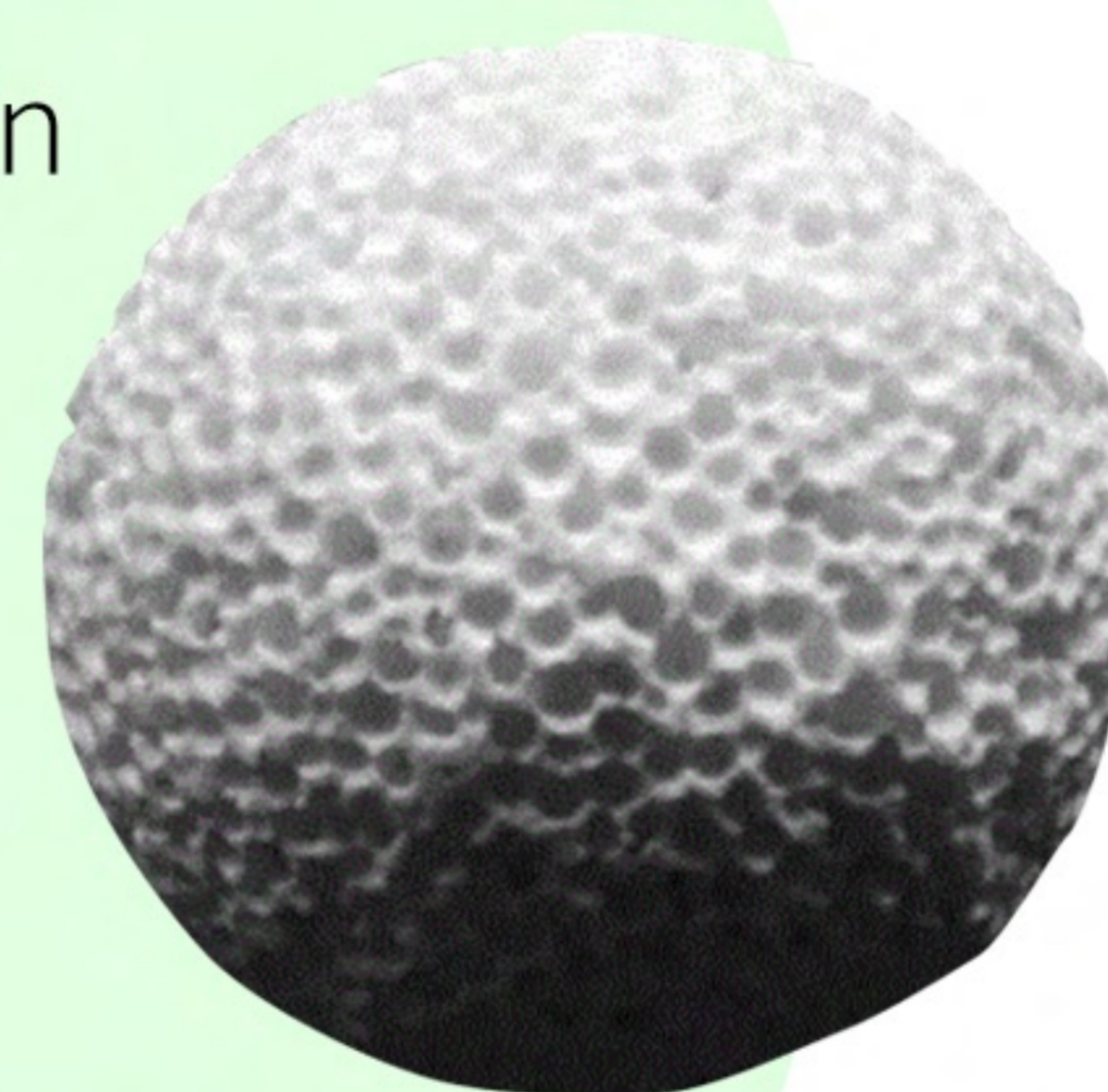
NANOFIL[®] Perfect-Link Universal Adhesive This Product is indicated for a comprehensive range of direct and indirect restorative indications and exhibits compatibility with all etching techniques.

MULTI-PURPOSE UNIVERSAL ADHESIVE

ADVANTAGES

- Maintains stable adhesion regardless of wet or dry conditions, ensuring consistent bonding integrity.
- Incorporates MDP to significantly enhance bonding strength through robust chemical interactions.
- Delivers strong adhesion to all indirect surfaces without additional primers, streamlining clinical workflows.
- This adhesive incorporates mesoporous bioactive glass (MBG) fillers, clinically proven to promote dentin remineralization and significantly reduce postoperative sensitivity.

Mesoporous BioGlass (MBG) represents a technological advancement in dental universal adhesives. By incorporating this porous, bioactive material, these adhesives offer not only strong adhesion but also the potential to actively contribute to tooth remineralization and reduce post-operative sensitivity, ultimately improving the long-term success of dental restorations.



SPECIFICATIONS

Net Weight: 5ml/bottle **Shades:** Pale yellow



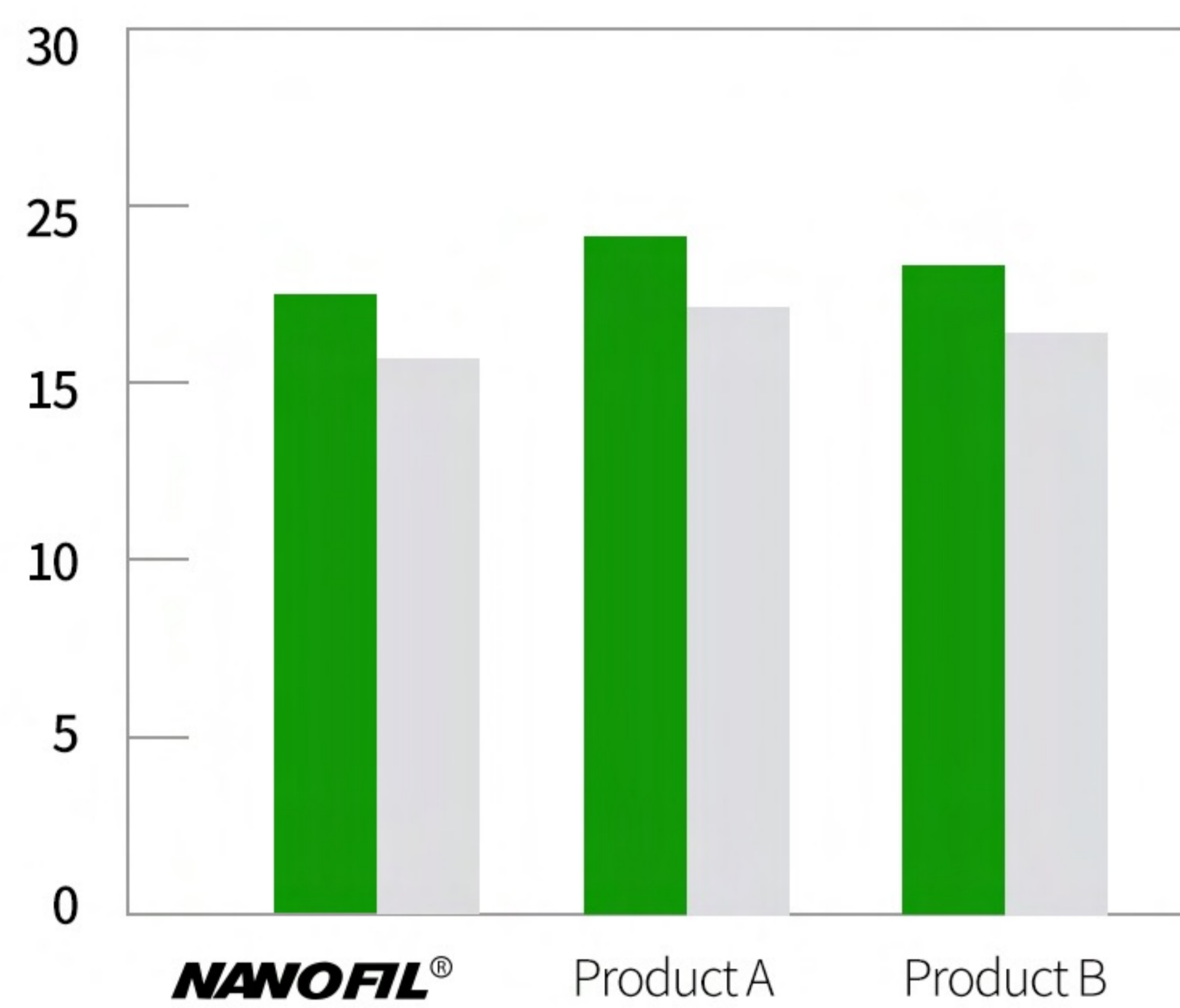
Always For Your Smile 

PERFECT-LINK Universal Adhesive

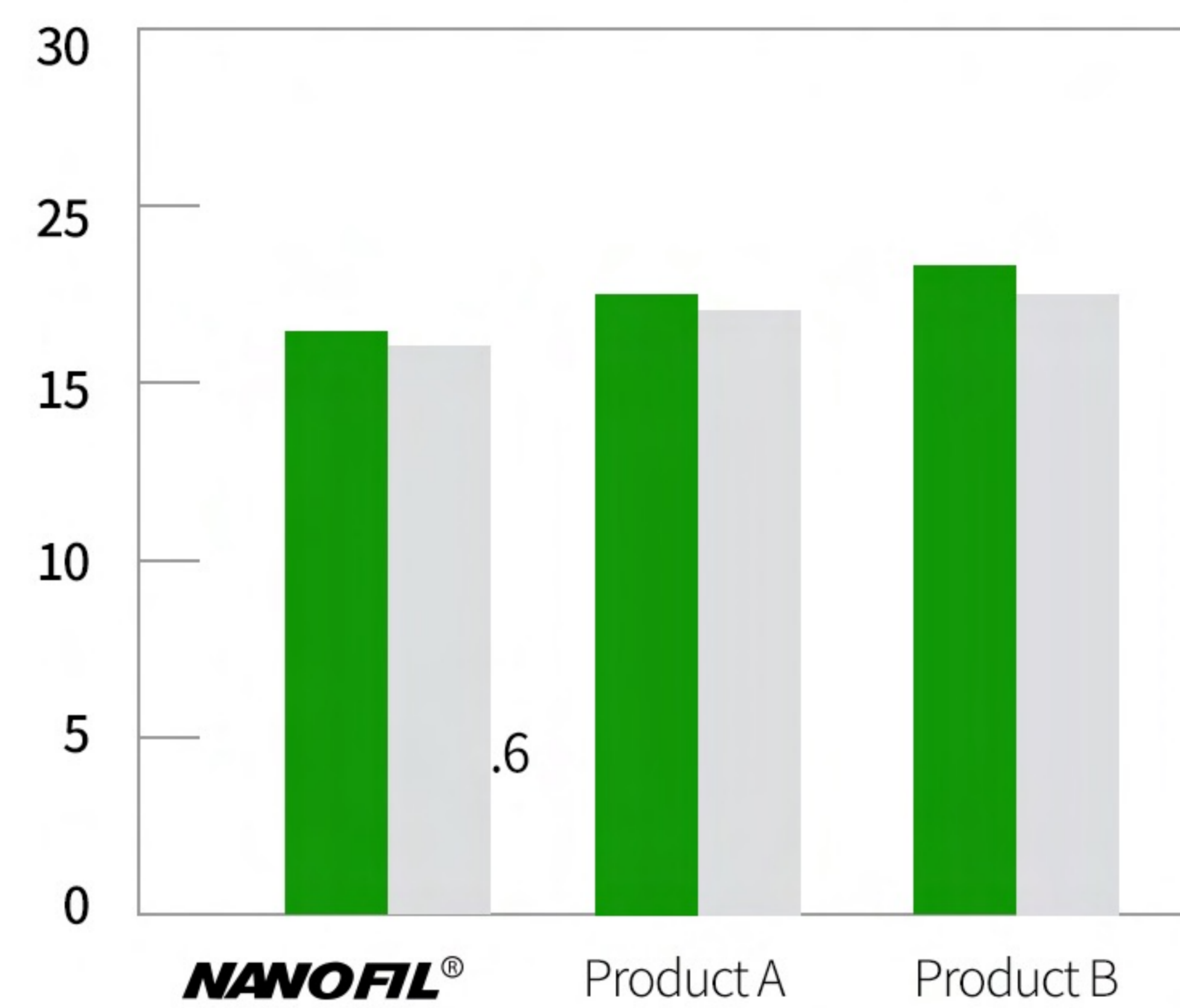
NANOFIL[®]

PHYSICAL PROPERTIES

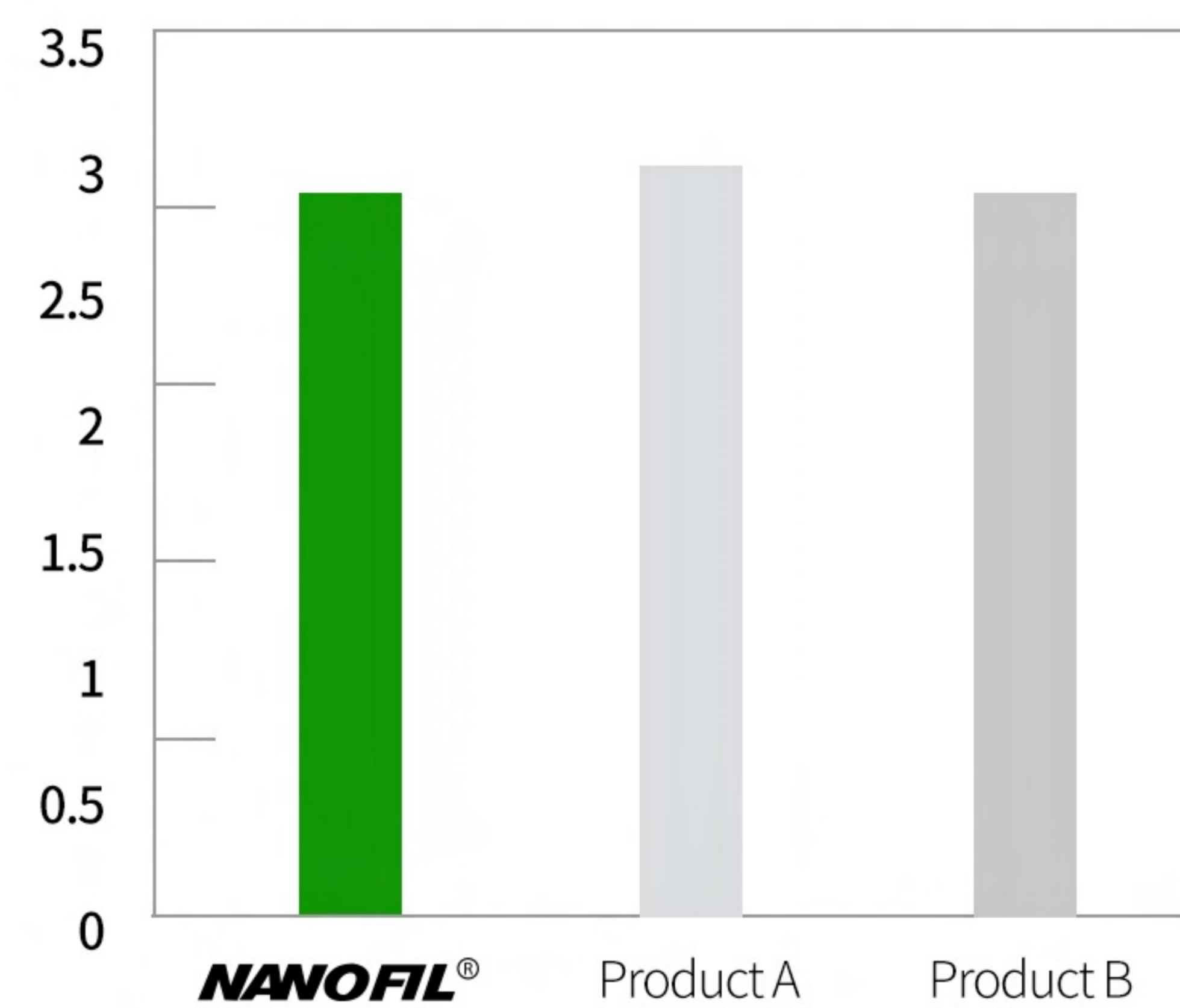
Bovine enamel bond strength(MPa)



Bovine dentin bond strength (MPa)



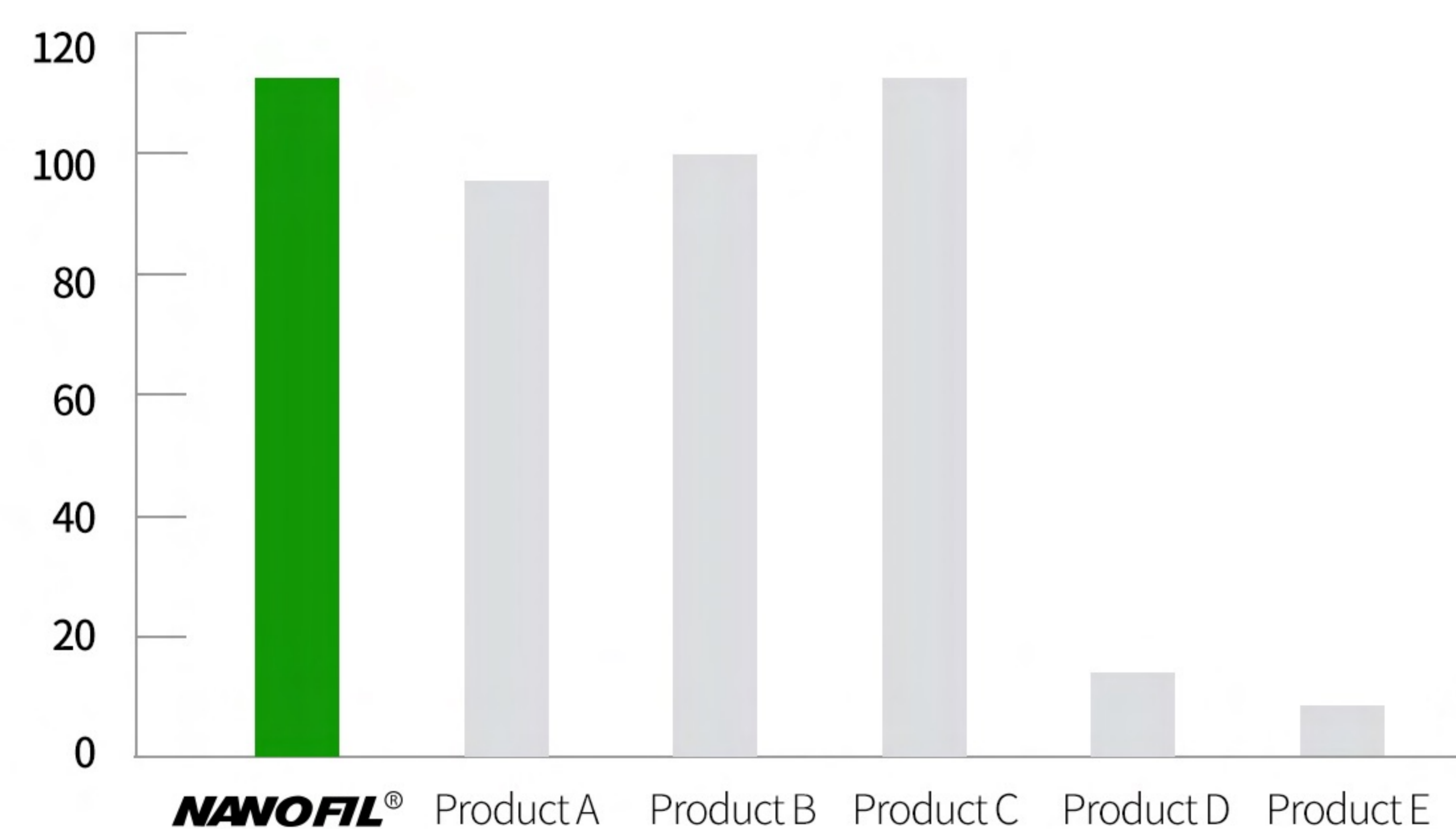
pH



★ Per the test results conducted by ATBIO

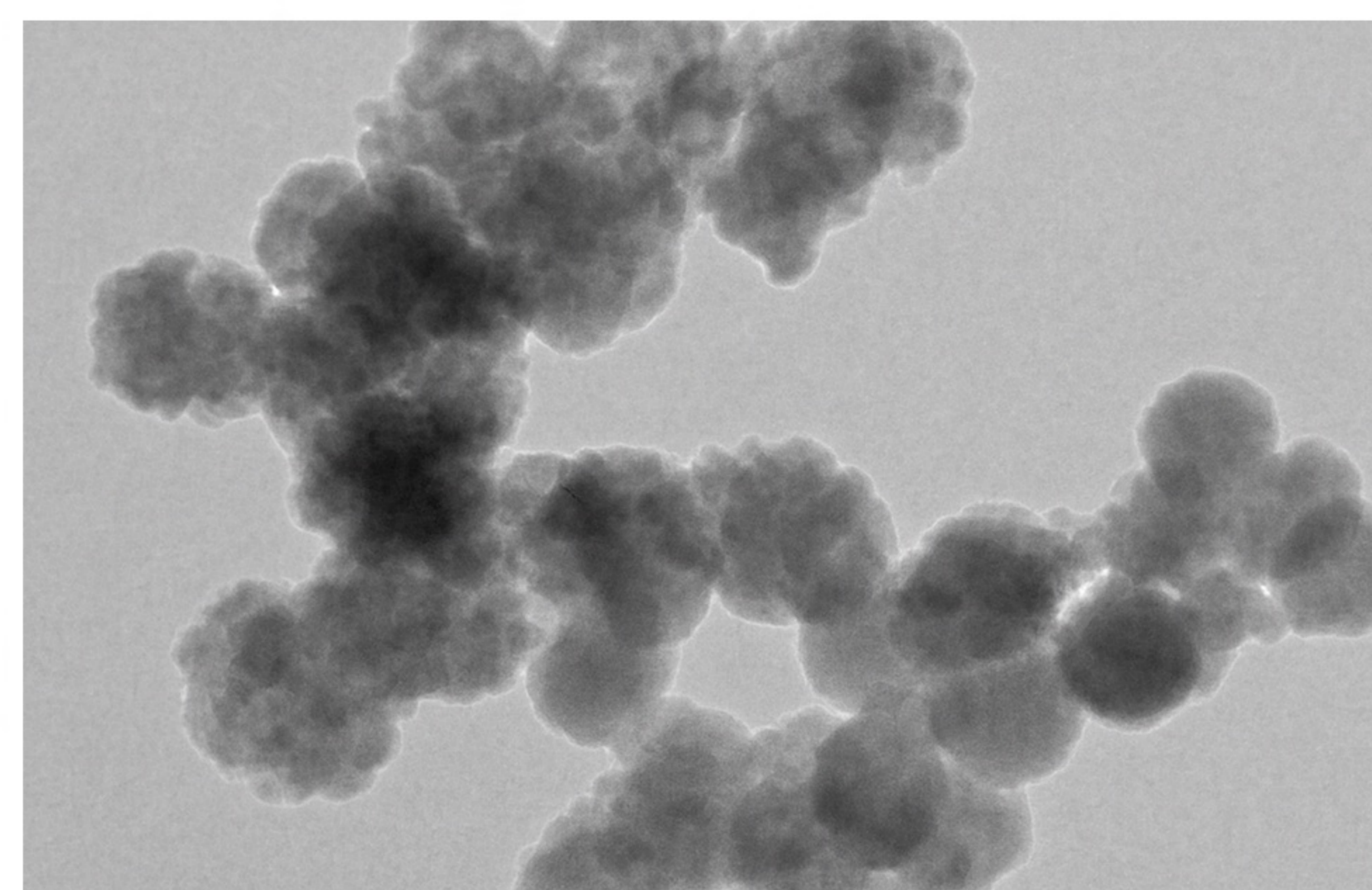
CELL VIABILITY TEST RESULTS

Cell viability(%)



★ Per the test results conducted by ATBIO

X 2,000-SEM Picture of mesoporous Bioactive Glass



Always For Your Smile

PERFECT-LINK Universal Adhesive

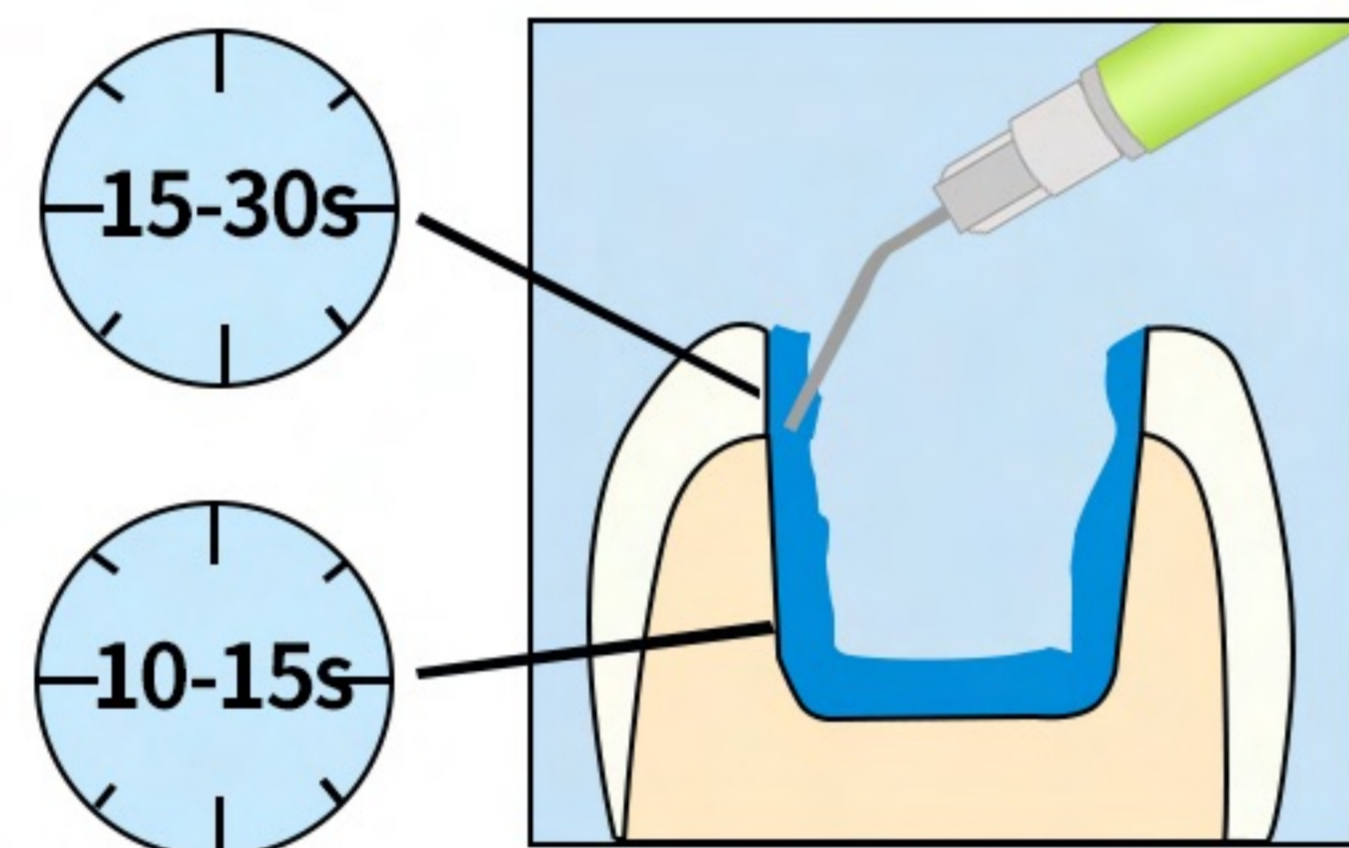
NANOFIL[®]

APPLICATION METHOD

Procedure for direct/ indirect restorations

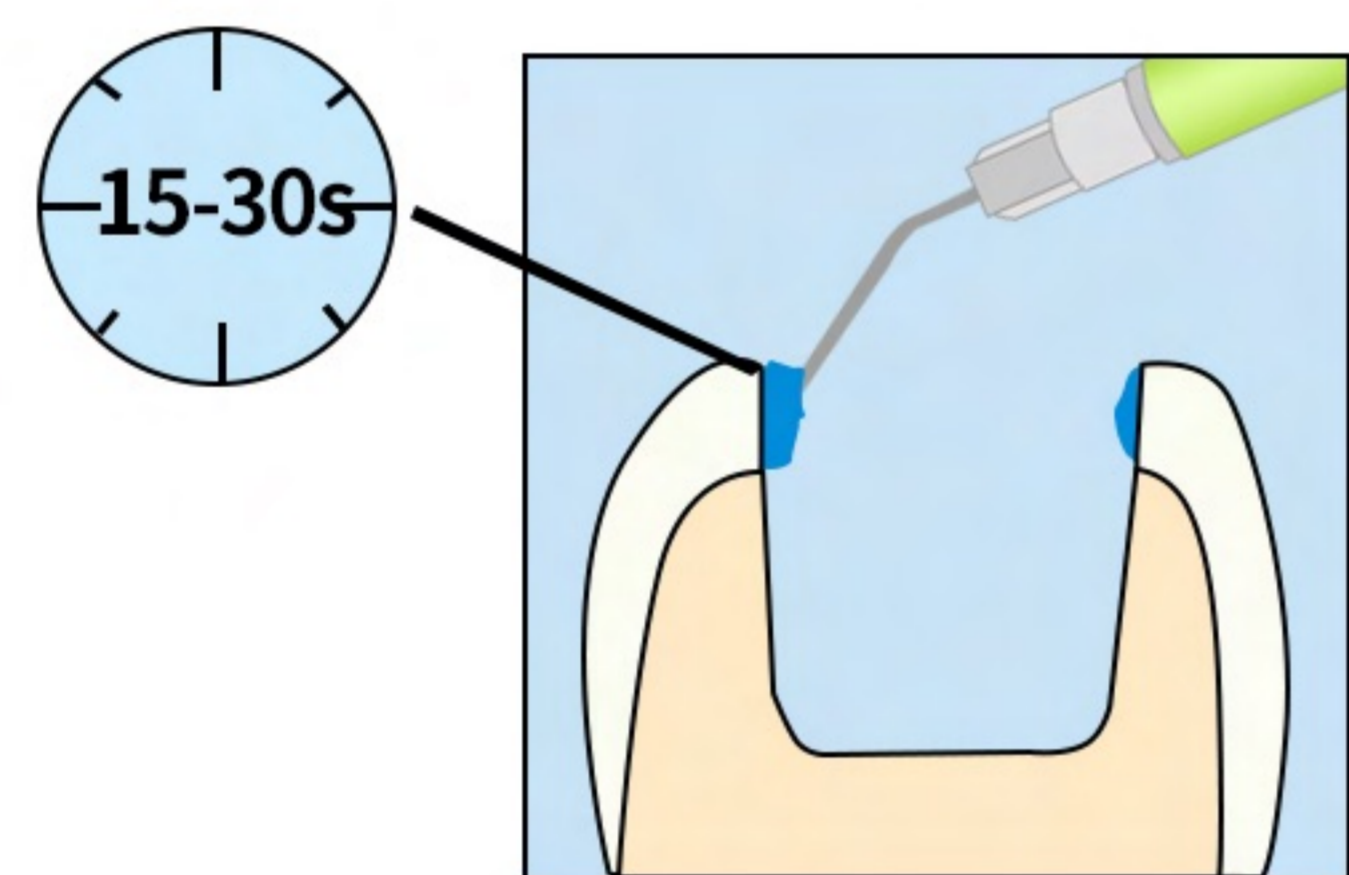
1

**Etch &
Rinse**



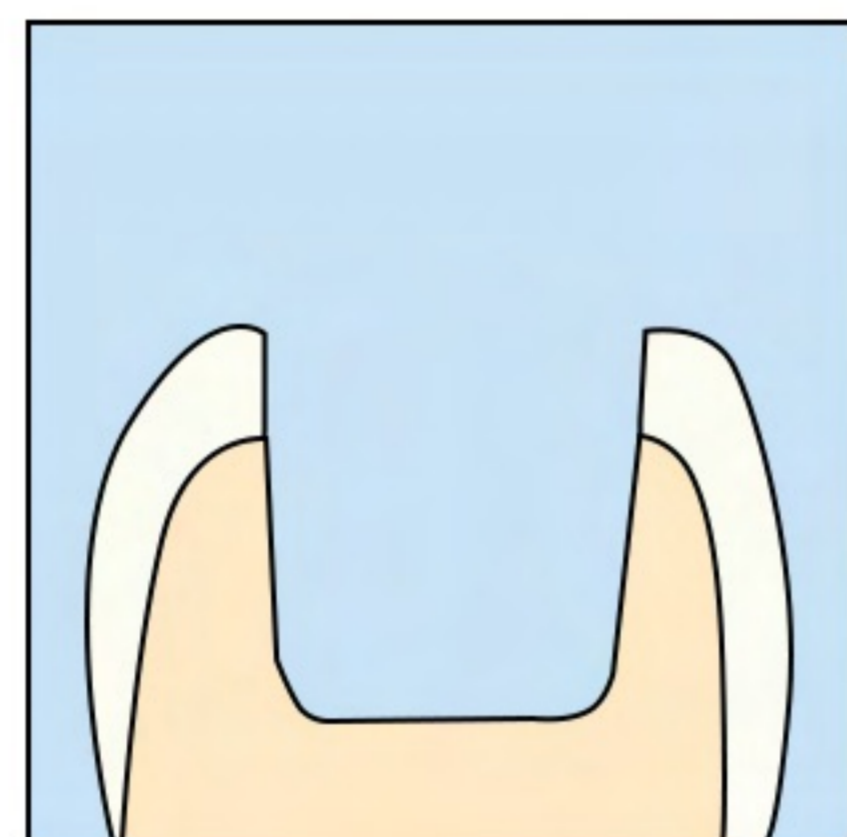
or

**Selective
Enamel-
Etch**

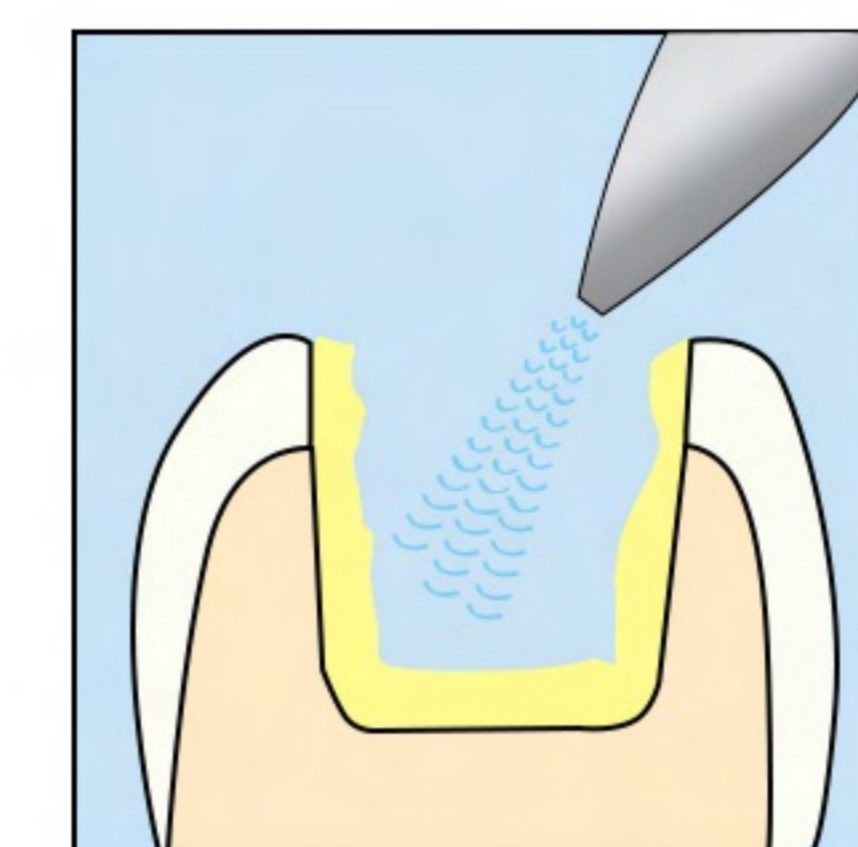
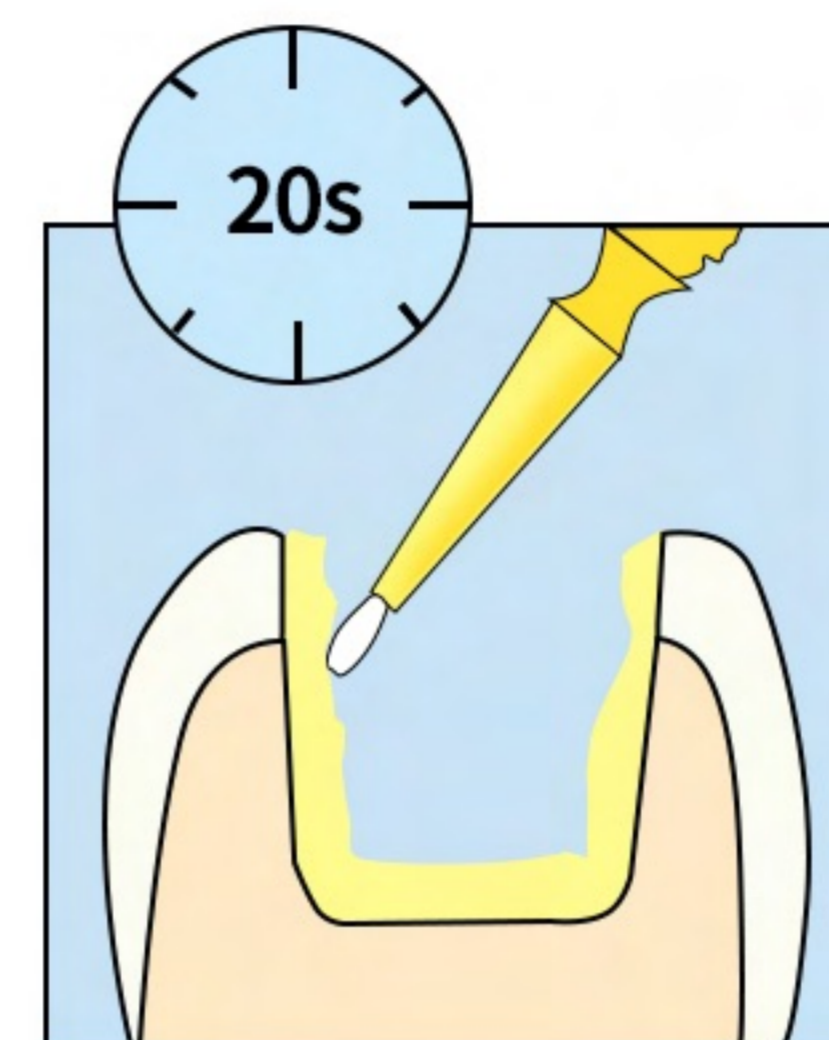


or

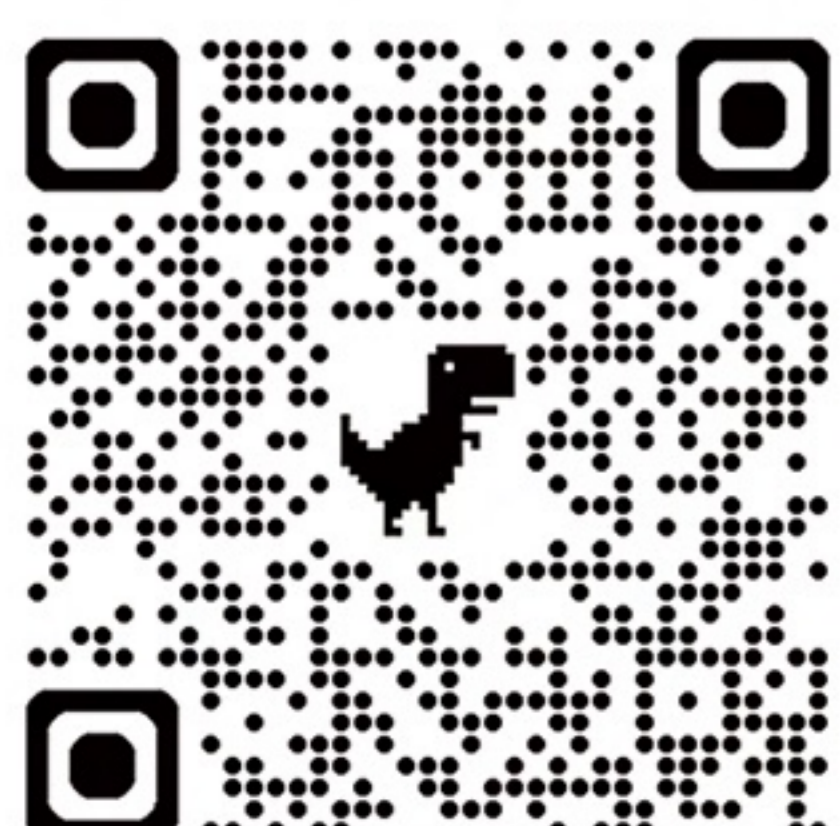
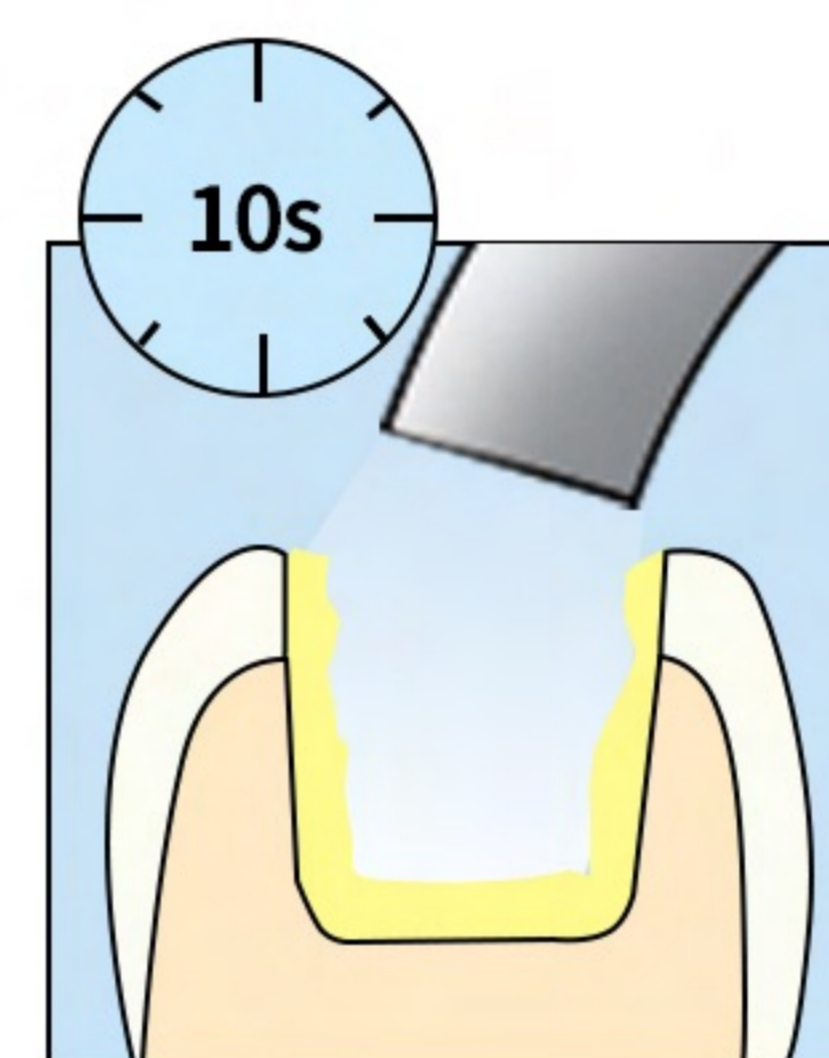
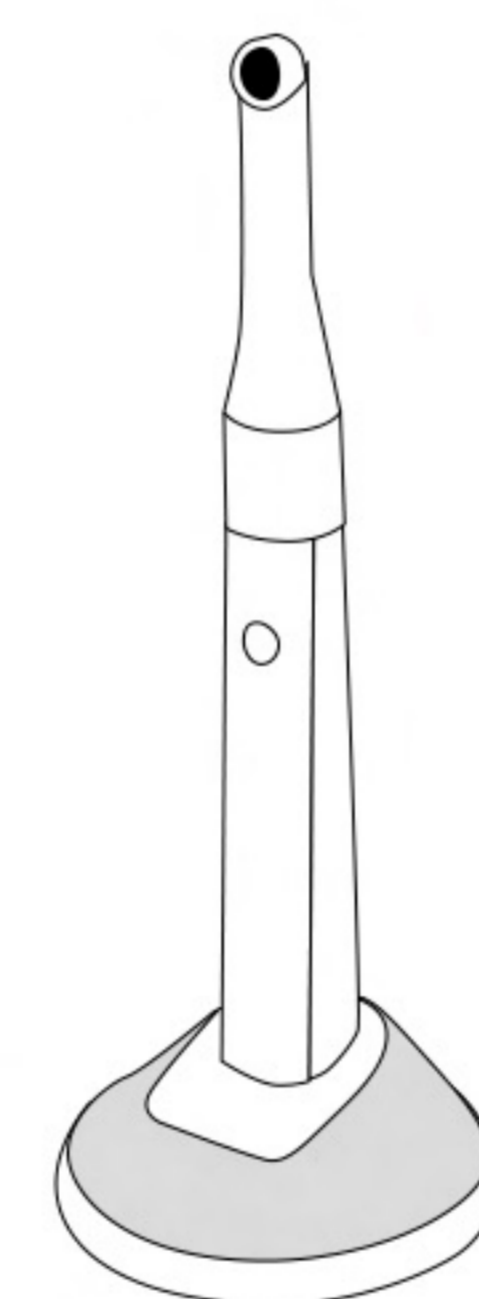
Self-Etch



2



3



Always For Your Smile



SINCE 1988

Always For Your Smile

CONTACT US



www.atmbio.com



info@atmbio.com



+8610-69778208

AT&M Biomaterials Co., Ltd.
Building 1, Zhongguancun Science and Technology Park at Pinggu,
Courtyard No. 46, Pingwang Street, Pinggu District, Beijing, China